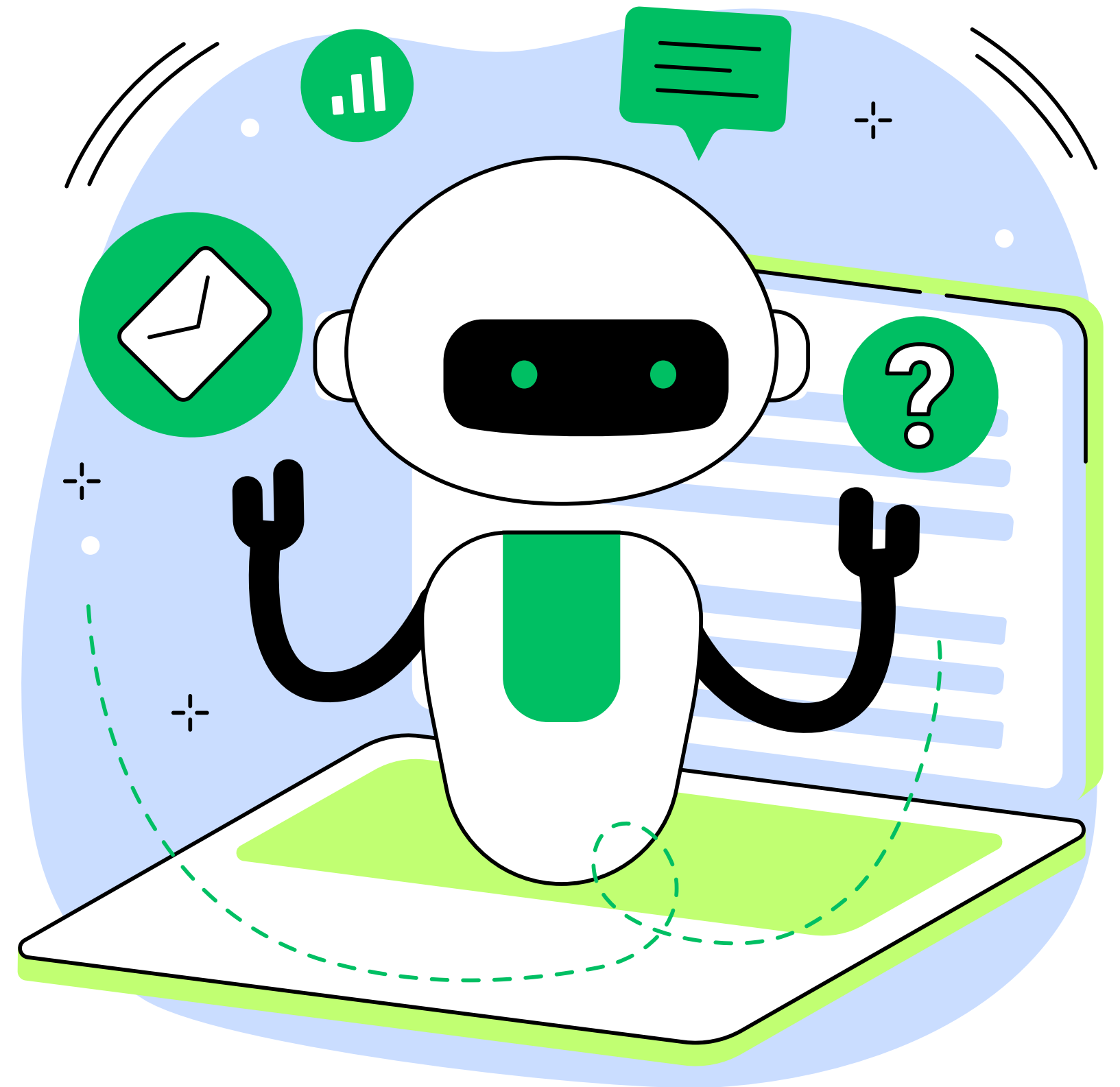




ARTIFICIAL INTELLIGENCE

WHAT IS ARTIFICIAL INTELLIGENCE?

Artificial Intelligence (AI) is the use of computer systems to simulate human mental processes, such as interpreting and generating language.



EXAMPLES OF ARTIFICIAL INTELLIGENCE

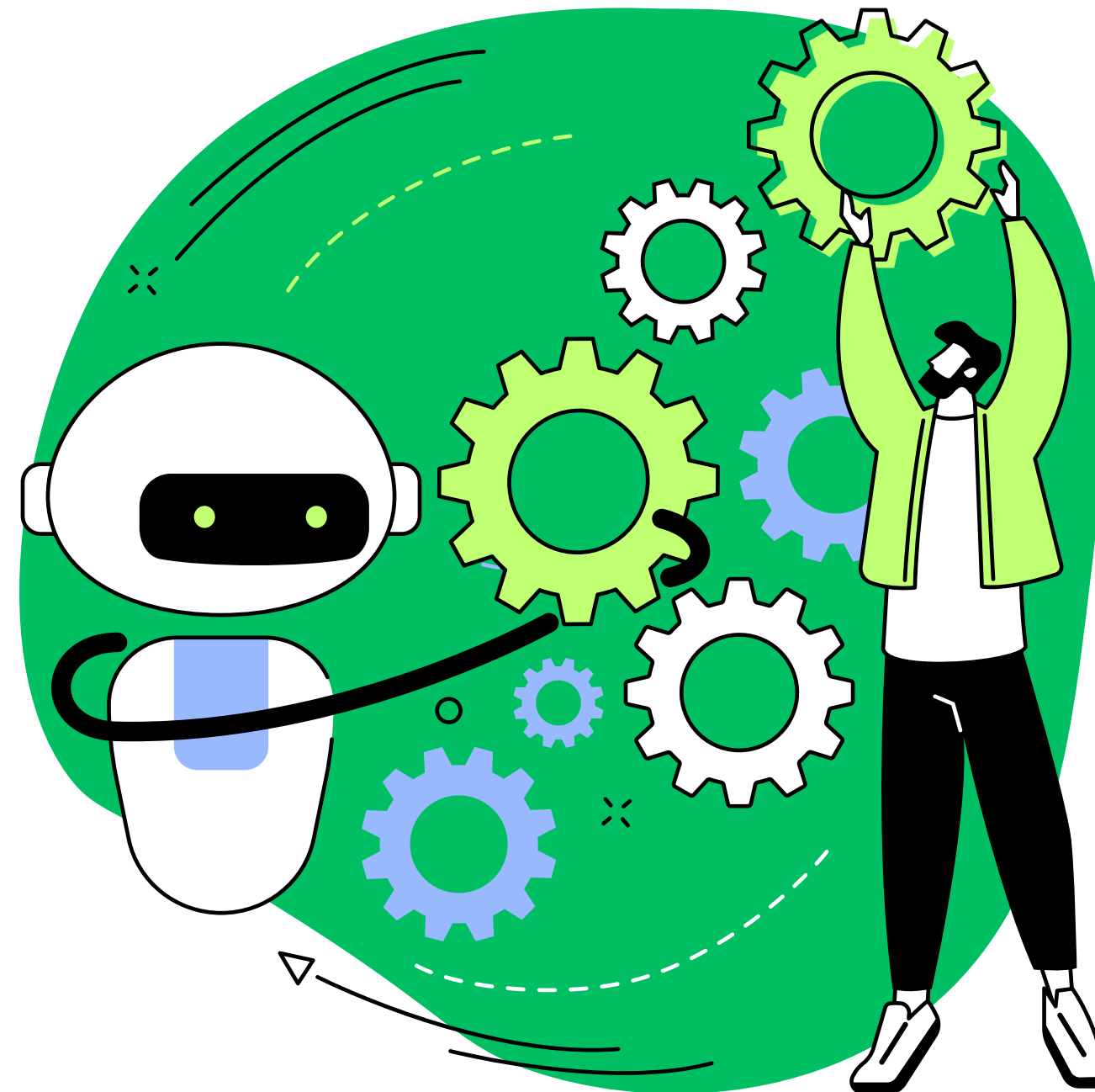
Chatbots

Smart assistants

E-Payments

Search algorithms

Media streaming



Smart cars

Navigation apps

Facial recognition

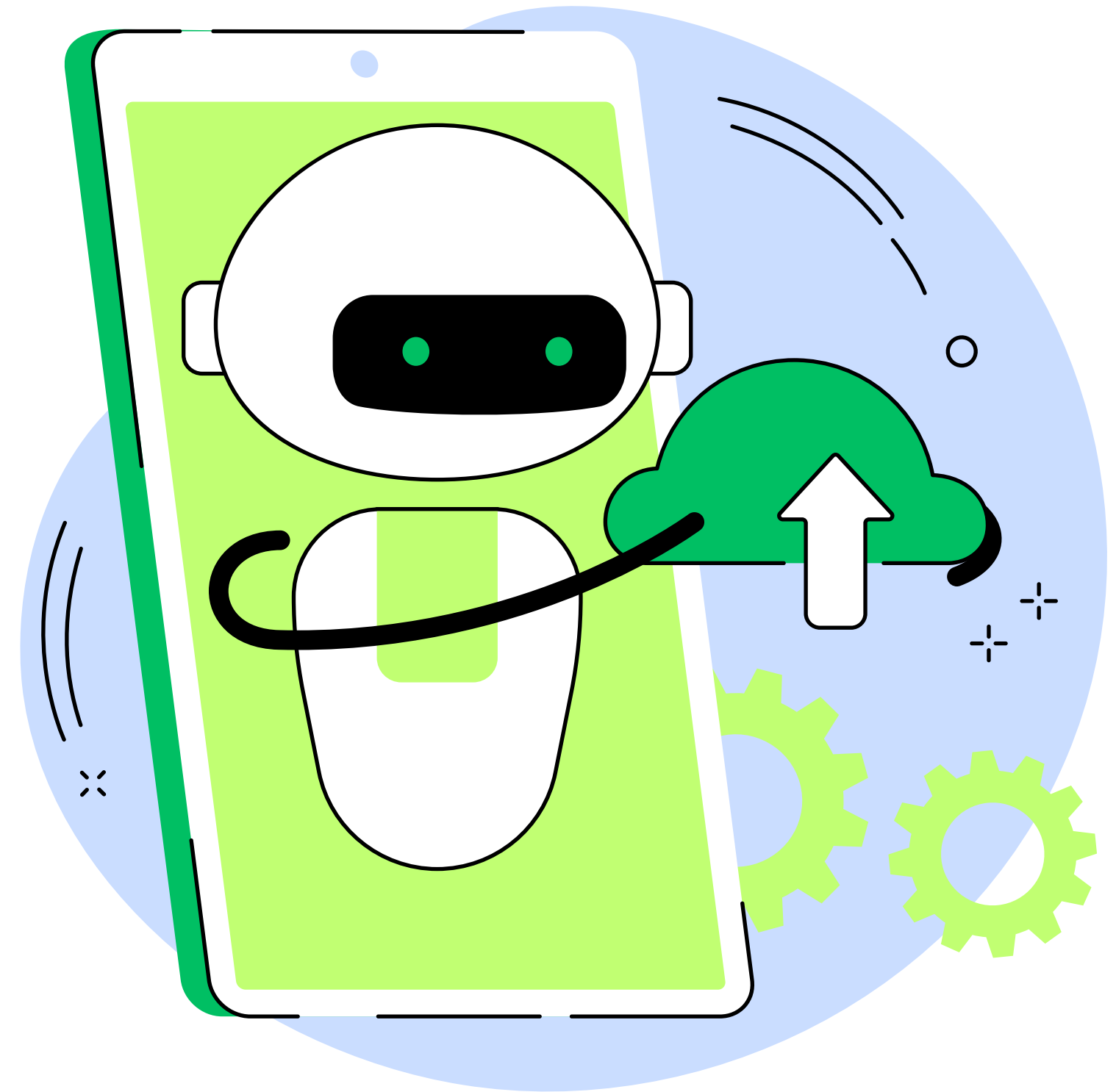
Text editors

Social media feeds

HOW TO USE?

All about writing and tweaking the prompts to determine outcomes. The more specific, the better the result!

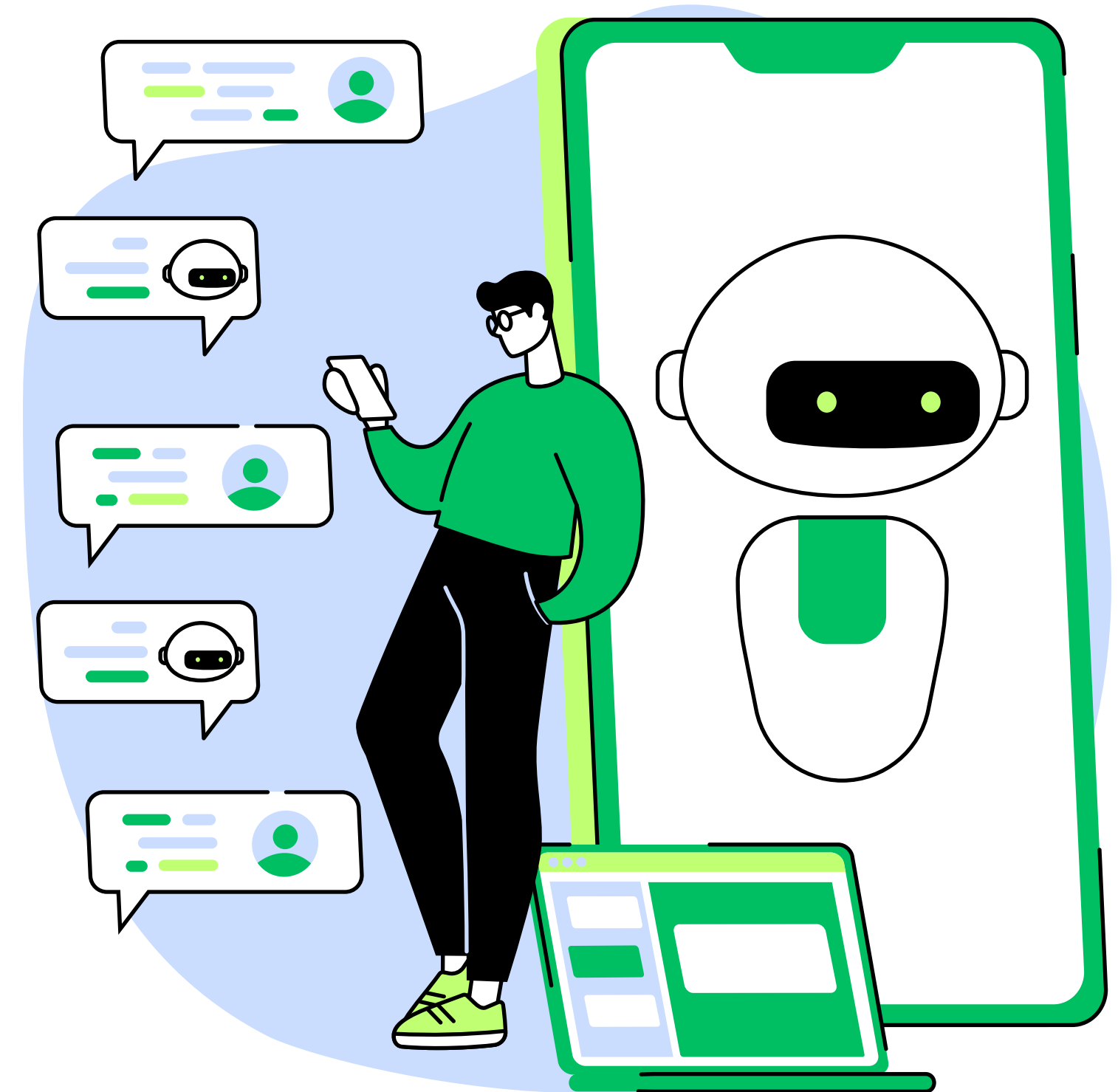
CHAT GPT



HOW CAN WE USE AI?

There are varying options to use AI
within the cleaning industry

Let's see them



PRACTICAL USES OF ARTIFICIAL INTELLIGENCE

Organization

**Cleaning
Schedules**

Create Images

Translation

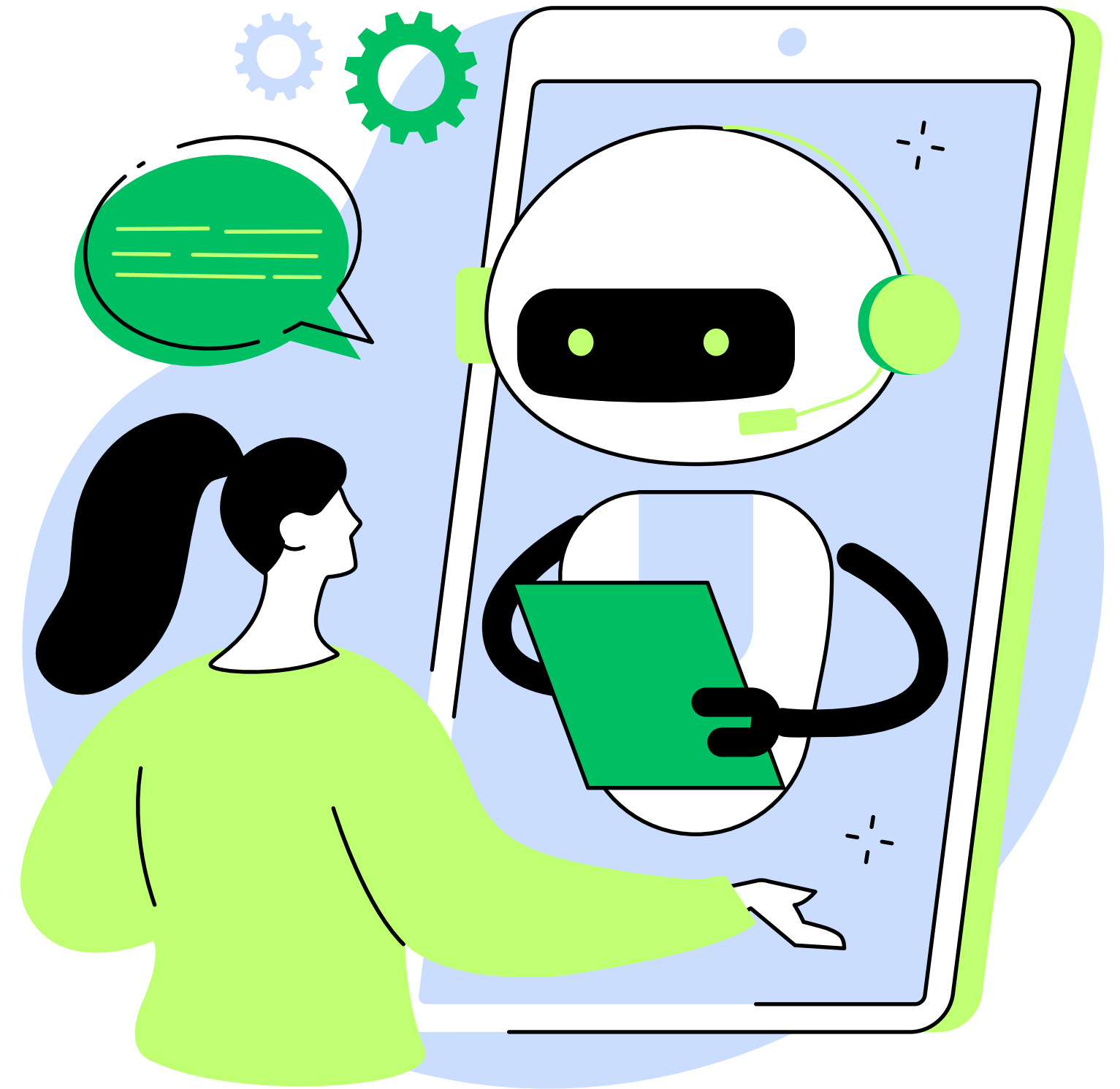
Chat Bots

**Idea
Generation**

Detection

WHAT PROBLEMS CAN AI POSE?

Since it is newer technology, it's not perfect. When is it ever?!



PROBLEMS AI CAN POSE TO EDUCATION

Lack of Personalisation

Although AI tools are constantly evolving, they lack the human emotions that are sometimes necessary.

Bias and Discrimination

Bias can occur in AI systems because of the data used to train them. AI algorithms may reflect societal biases, prejudices, and stereotypes.

Dependence on Technology

People may become too dependent on technology, hindering their ability to think critically or solve problems.

Data Privacy and Security

AI-powered tools in general often collect vast amounts of personal data, which might pose a threat to privacy and security.

IS NOW THE RIGHT TIME?

AI is still developing and its early stages for it to be fully automated, but who knows what changes will happen soon!

